



**BS EN 1765  
DOCK  
HOSE**



**APPLICATION/SERVICE:**

Smooth Bore (SB) Dock hose designed, manufactured and tested in accordance to BS EN 1765: 1998 (formerly BS1435). SB Dock hose is designed for the transfer of petroleum based products between docks and ships under all types of service conditions

**CONSTRUCTION:**

- Tube:** Chemigum (Nitrile) suitable for 55% aromatics. Also available in Viton (Flosyn)
- Reinforcement:** Multiple plies & wire helix
- Cover:** Wingprene (Neoprene)
- BRANDING:** Embossed name plate on hose cover at both ends and a stainless steel nameplate on coupling end
- TEMPERATURE:** -20°C to +82°C
- LENGTHS:** Individual lengths made to order
- MINIMUM BURST:** All sizes rated at 4:1 ratio and rated at full vacuum
- DIMENSIONS:**

Type S10 150psi WP

Size	ID x OD (mm)	Weight Kgs/mtr	Bend Radius
4"	102.1 x 139.2	10.1	24"
6"	152.7 x 194.1	18.1	36"
8"	203.6 x 248.5	26.0	48"
10"	253.9 x 300.7	35.2	60"
12"	305.5 x 353.6	39.9	72"

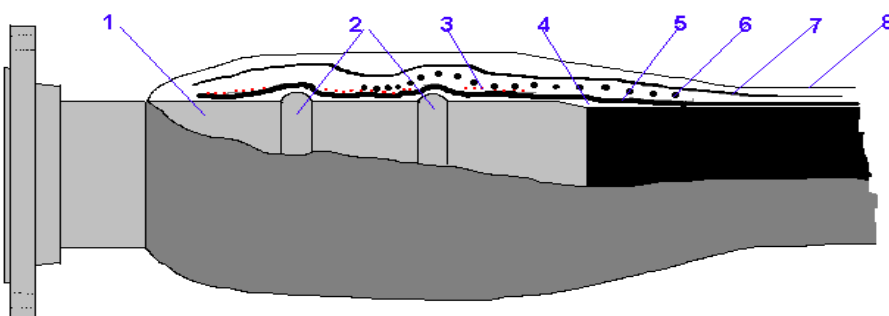
Type S15 225psi WP

Size	ID x OD (mm)	Weight Kgs/mtr	Bend Radius
4"	102.1 x 139.2	10.1	24"
6"	152.7 x 194.1	18.1	36"
8"	203.6 x 248.5	26.0	48"
10"	253.9 x 299.3	33.4	60"
12"	305.5 x 353.6	39.9	72"

Tubes available in Nitrile or Viton compounds

**COUPLINGS:** - Various coupling versions are available i.e. 150lb Raised Face, Floating/Swivel, Weld Neck, Slip-on, Galvanised, Flat Face, 300lb flanges. Electrically continuous / discontinuous. Please contact our marketing dept. for further details

BUILT IN AND BONDED HOSE FITTING (not drawn to scale)



- Key:**
1. Carbon Steel flanged hose spigot or tail
  2. Welded steel retaining bands
  3. Internal wire binding
  4. Rubber lining bonded to steel spigot
  5. Reinforced fabric layers
  6. Fully embedded steel wire helix
  7. Wire holding fabric layer
  8. Fabric impression rubber cover